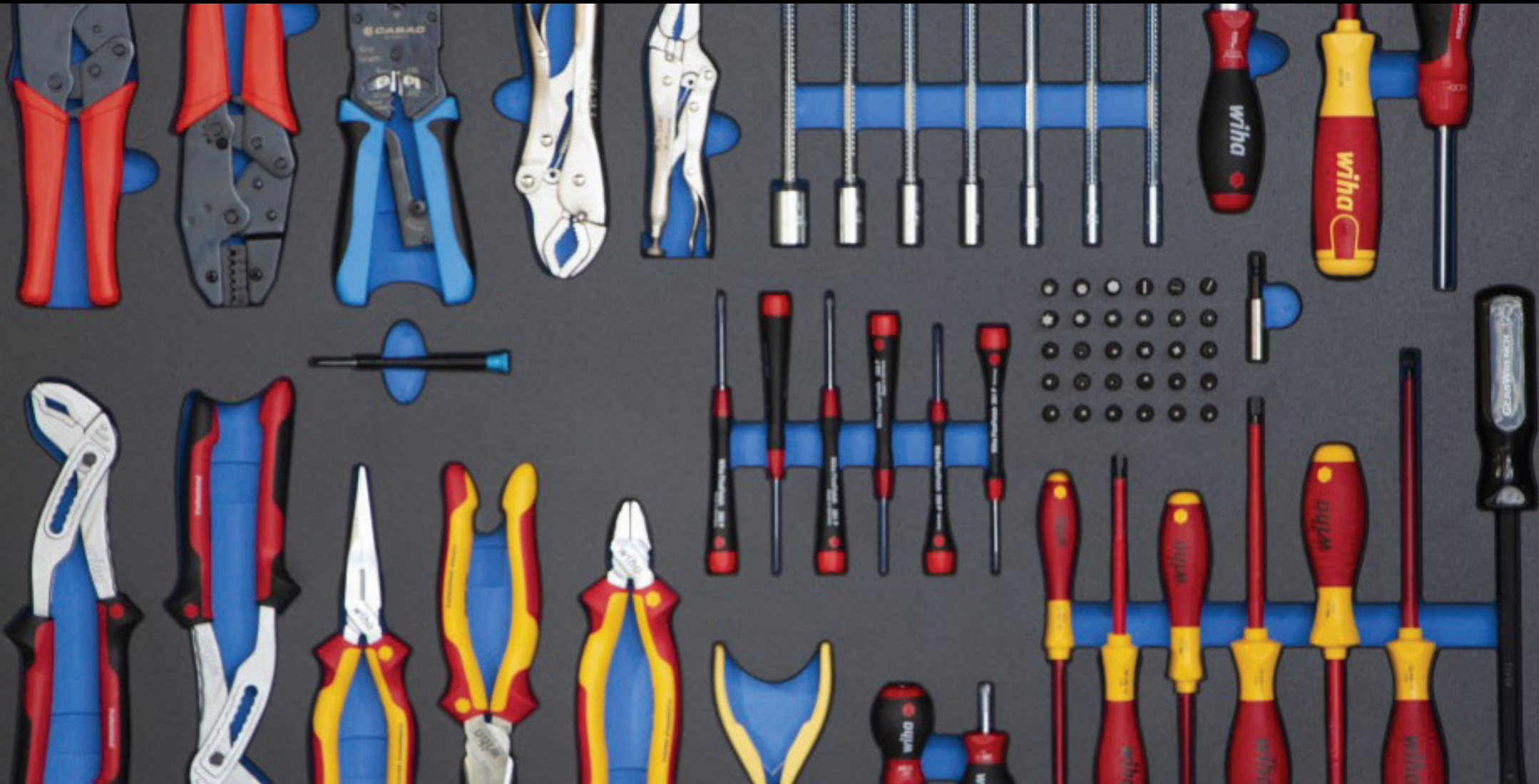




henchman
p r o d u c t s



Tool Storage

Configurable Standard Toolkits



To save you time and money wasted on sourcing equipment, as a single-source supplier we design a toolkit with you that meets the requirements of your plant or vehicle maintenance engineers and technicians – with their unique range of tools and a professional branded presentation.

Your custom toolkits can easily be modified and quickly reordered as one part number to significantly reduce your order processing time.

Your Benefits:

- Single-source supplier for all your tooling needs
- Easy order process for additional toolkits and the replacement of single tools
- Wide range of storage options available – with pouches, straps or custom-cut foam inlays
- Top quality tools and cases at cost effective pricing



Visual Tool Control

In a toolkit with **Shadow Foam** for visual tool control there is an allocated place for every tool, reducing downtime caused by searching for lost tools and increasing efficiency. It will let you see instantly which tools are in use.

Laser Etching the toolkit number onto the tools will also let you know which toolkit a tool belongs to. And etching the tool number onto the hard wearing top layer of the foam inlay clearly identifies which slot the tool belongs into.

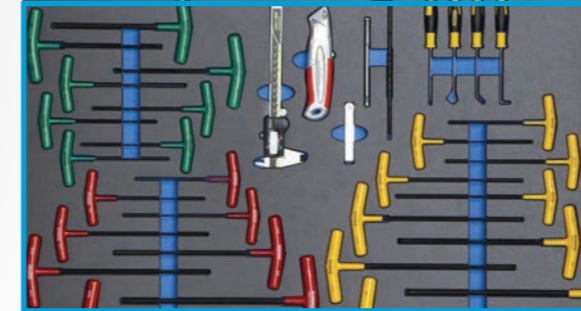
Storage Options

Henchman has large range of storage options to suit every requirement. Our range includes everything from small canvas bags to fully automated electronic tool boxes.

Explorer Transit Cases are virtually indestructible. Their dust and waterproof qualities make them ideal for use in the harshest of environments.

Our heavy-duty **Roller Cabinets and Workbenches** can be customised for any type of application.

How To Build Your Custom Toolkit



Create your Tool List (Templates available)

Henchman has many toolkit lists on file should you require assistance in making up a kit. Having produced toolkits for over 20 years, these lists have proved very valuable to customers even as prompts when making their selections.

It seems there are always some unique requirements which is why we offer customised solutions.

1



Select your Tool Brand(s)

The choice of tool brand is yours!

In our experience, every discerning engineer admits “no one brand is the best” – a simple example being Knipex pliers is arguably the best plier manufacturer in the world.

We are extremely flexible and happy to assist in selecting the “pick of the bunch” and at the same time saving you money. We can assist with tool list templates where required.

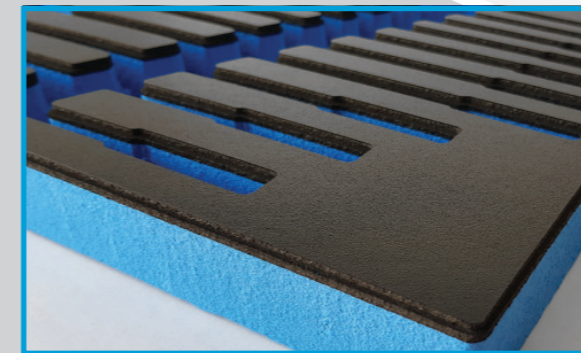
2



Select your Storage Option

From soft cases or hard cases with wheels or drawers to roll cabinets or container workshops – our customized toolkits are scalable to every storage option and come in a range of shapes and sizes.

3



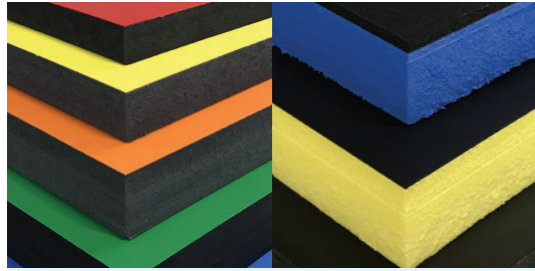
Upgrade to Custom Foam Inlays

- High density Polyethylene (PE) foam faced with a hard layer of chemical resistant Polypropylene (PP)
- Digitised into our CAD software to individual case layouts.
- In-house design and manufacture of foam inserts
- Custom made to any configuration
- Kits assembled and supplied complete

4

Customisation: Pick Your Options

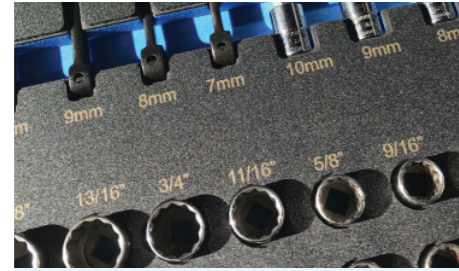
Henchman is widely known as the leading custom case toolkit provider for the aircraft industry globally. Our long experience in customising superbly fitting foam case interiors for a large range of applications allows us to deliver a superior service, product and price.



Foam Colour Selection

The standard colours are blue foam with a black top, but we can offer a variety of colour combinations for you to choose.

- Protective black polyethelene top layer thermally bonded with small rebate to allow tools in and out easily
- 5mm layer black high density foam to maximise the visual toolcontrol contrast comparing tools in against tools out
- High density contrasting blue polyethelene foam, various heights available
- 1mm Polypropylene bottom layer to provide some rigidity



Foam Laser Marking

The bright coloured high-density Polyethylene foam receives a contrasting Polypropylene top layer, which is very hard wearing, easy to clean and ideal for labelling or marking.

Tool part numbers or sizes can be laser marked next to each slot, making it easy to select the right socket, for example, without having to remove multiple sockets to check the etching on the item.

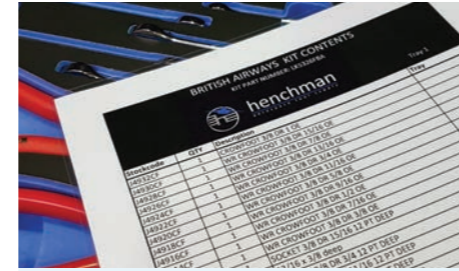


Tool Laser Marking

Toolkit numbers can be laser marked onto every tool in the kit as an almost permanent marking.

When a loose tool is found, these markings can be used to identify which toolkit the tool belongs to.

Laser etching combined with our HenchmanTRAK system provides a perfectly effective alternative to barcodes or RFID tags on individual tools.



Inventory Lists

We can provide a list of the toolkit contents on laminated cards, showing the layout of the kit and it's contents for easy reference.

This provides all relevant information, like the part number, a clear description, the quantity and location within the kit, making it easy to identify (and also reorder) a missing tool.



Outside Labelling

We offer various label options for the outside of your chosen tool storage, including but not limited to:

- part number emblems for easy identification of the kit
- branding options like your company logo, name, slogan and contact details
- HiViz labelling in various colours

Custom Fitouts



Our toolkits are scalable and come in almost every shape and size - there are more options than just the traditional toolbox or case.

Toolcrib & Container Setup:

This mobile toolcrib container can be fitted with workbenches and storage for tools, toolkits and equipment.

It can also be fitted with our Electronic Tool Control System Henchman-TRAK to track the issue and return of tools to and from the crib or container.

Drawer Fitout:

Our two-coloured foam inlays are also suitable for Ute trays, built-in drawers and toolboxes.

Multiple layers and liftouts are possible, due to the rigidity of our foam.

We work with you to ensure that all your tools fit in with the best possible layout for accessibility and ease of use.

Our foam is water-repellant, wipeable and non-soaking – to ensure durability and make it suitable for outdoor use.



Tool Belt / Vest / Roll



Small Tool Storage

The Top Work Line range of products is ideal both for PROS and DIYers, they are exceptionally robust, practical and have a huge carrying capacity:

Tear resistant fabric made of 600D polyester, resistant to chemical agents and low temperatures, matched with 3M refractive stripes, reinforced stitching and zip fasteners, easy to open but secure at the same time.



Part No.	Ref	Storage	Dimensions
TT-ROLL	A	GT Line Top Tool Roll	605 x 540 x 0mm
TJK-1	B	GT Line Tool Jacket	480 x 660mm
TOP ELECTRA	C	GT Line Electricians Tool Pouch	
TOP BUMBAG	D	GT Line Topline Bumbag	320 x 140 x 180mm

Beehive Bags



Toolbags made with Vinyl Fabric

Manufactured from Australian Made heavy duty reinforced ripstop vinyl with anti fungal protection as well as being UV resistant.

Vinyl material is flame retardant tested to parts 2 & 3 of AS1530 standard to meet Australian Building Codes. Also tested to AS2001.2.3 tensile strength standard, BS 3424.5 tongue tear standard, AS1441.6 flex cracking standard.

Welded and stitched using chemical & UV resistant thread.

Fully moulded wrap around hard HDPE base added to the bottom of the tool bag.



Part No.	Ref	Description	Dimensions
BPACK	A	Vinyl Back Pack	325 x 190 x 430mm
WMCHMB	B	Small with Double Front Pockets	330 x 230 x 175mm
DBHMB	C	Double with Hard Moulded Base	480 x 280 x 200mm

Toolbags



Bags made with tear-resistant Fabric

Exceptionally robust, practical and with a huge carrying capacity. Tear resistant fabric made of 600D polyester, resistant to chemical agents and low temperatures, matched with 3M refractive stripes, reinforced stitching and zip fasteners, easy to open but secure at the same time.

All the Top Work Line tool bags are characterized by a rational and logical arrangement of the internal pockets, and are equipped with internal and external padded tool pouches to resist heavy-duty use and last forever.

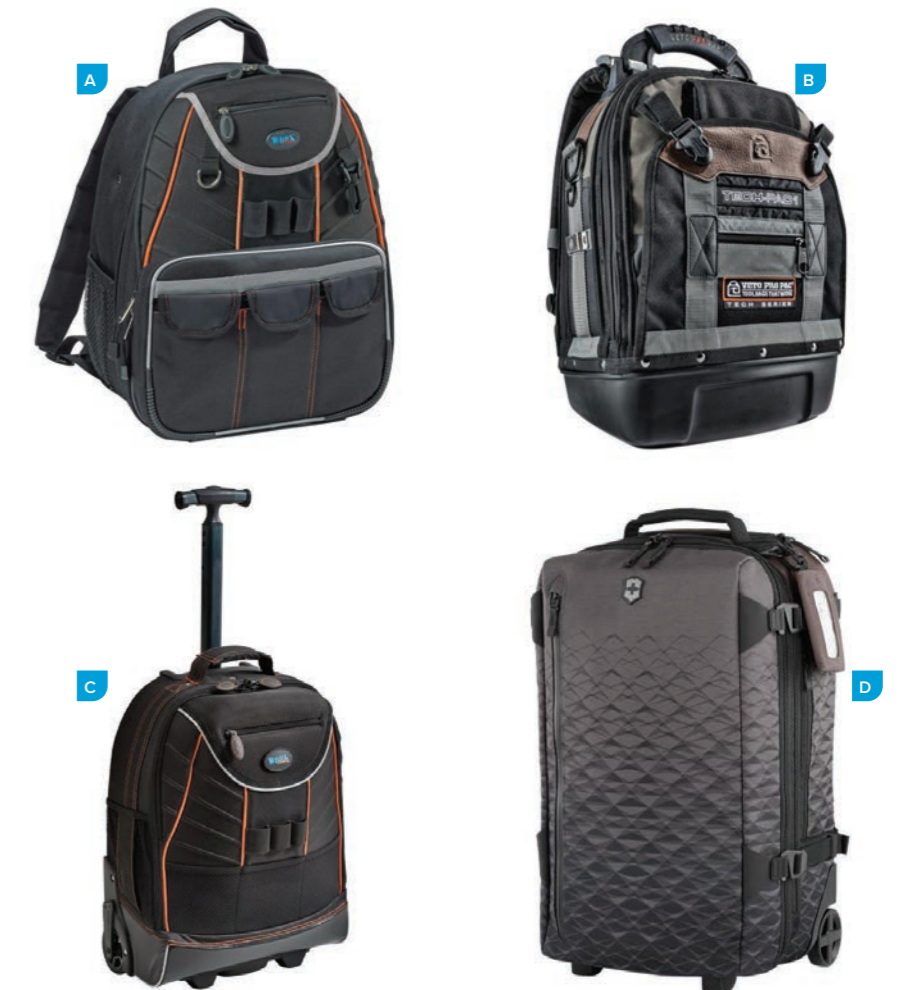


Part No.	Ref	Description	Dimensions
TOP 04	A	GT Line Toolbag with Zip and Shoulder Strap	410 x 230 x 300mm
TOP 06N	B	GT Line Tool Bag Tear Resistant Fabric	515 x 210 x 300mm
TOP 05	C	GT Line Laptop Bag	390 x 120 x 310mm

Backpacks



Designed to enable the safe and comfortable transport of a variety of tools when servicing equipment accessible by extension or cage ladders, or in cities or industrial buildings where walking long distances is required.



Part No.	Ref	Storage	Dimensions
TOP 07	A	GT Line Topline Backpack	440 x 340 x 150mm
VTPBAG	B	Veto Tech PAC Tool Backpack	35.5 x 21.6 x 48.3cm
TT-01	C	GT Line Backpack Toolcase wheeled	360 x 200 x 480mm
604322	D	Victorinox VX Backpack Case wheeled	230 x 360 x 550mm

Zipper Bags

Soft Cases with Zippers



The Henchman zipper toolcases are the ideal toolbags, designed to take an optimum amount of tools. The bigger models come with an external pouch for document storage and accept three to four of our tool-set modules.



Part No.	Ref	Storage	Dimensions
TZK302	A	Small Case with Zipper	300 x 175 x 95mm
TZK304	B	Mini Case with Zipper and Divider	380 x 240 x 70mm
TZK802	C	Zipper Case with Outside Pouches	430 x 105 x 330mm
TZK803	D	Large Zipper Case	430 x 330 x 150mm
TZK804	E	Large Zipper Case with Laptop Pouch	450 x 360 x 170mm

Hard Cases with Pouches



Modern and exceptionally strong, these cases are studied to resist even in the most extreme use conditions. The double wall construction and the body in shock-proof high density Polyethylene, with great resistance to high and low temperatures and to most of the corrosive chemical substances, grant to this product the highest levels of reliability on the market.



Part No.	Ref	Description	Dimensions
BOMBER-PTS	A	GT Line Bomber Toolcase	422 x 327 x 185mm
BOXER-PTS	B	GT Line Boxer Toolcase	430 x 340 x 156mm
REVO-PTS	C	GT Line Revolution Toolcase	453 x 332 x 197mm
ATOMIK-PTS	D	GT Line Atomik Toolcase	465 x 352 x 215mm
ATOMIK TWIN PTS	E	GT Line Twin Atomik Toolcase	465 x 352 x 230mm

Wheeled Hard Cases



Technologically advanced, injection moulded, high thickness Polypropylene tool cases. This material makes the case extremely resistant against chemical corrosion, shock, high and low temperature. The injection technique ensures constant material thickness, even in the corners.



Part No.	Ref	Description	Dimensions
ROCK350-PTS	A	GT Line Rock Turtle Toolcase	470 x 320 x 470mm
TMW-PTS	B	GT Line Megawheels Toolcase	453 x 345 x 218mm
REVO-WH-PTS	C	GT Line Revo Toolcase	439 x 312 x 170mm (int)
ATOMIK WH PTS	D	GT Line Atomik Toolcase	465 x 352 x 255mm

Waterproof Toolcases



Watertight to 10m. and perfectly sealed thanks to the exclusive neoprene O-ring and to the purge valve, these cases grant an absolute protection. Made of unbreakable lightweight resin, they are provided with strong locks and a practical and ergonomic handle.



Part No.	Ref	Storage	Dimensions
GTB3818-PTS	A	GT Line Explorer Case 3818B	410 x 340 x 205mm
GT44-19	B	GT Line Explorer Case 4419B	474 x 415 x 214mm
GT58-23	C	GT Line Explorer Case 5823B	670 x 510 x 262mm
GT42-16-PTS	D	GT Line Explorer Case 4216B	420 x 300 x 160mm (int)
GT42-09-PTS	E	GT Line Explorer Case 4209B	420 x 300 x 95mm (int)
GT52-21-PTS	F	GT Line Explorer Case 5221B	520 x 285 x 205mm (int)

Explorer Cases



Providing a waterproof and dustproof storage solution for any sensitive/expensive equipment requiring a high level of protection to suit the harshest enviroment or for airtravel applications. Regularly used in the Military, Aerospace, for Computer storage, Camera Equipment, Scuba Equipment, by Police and Fire Brigades.

Every model comes in three colours (black, orange or green). Features can include detachable lids, wheels,



Visit our website to see all available sizes.

All in one Cases



Specifically engineered for the professionals that need to carry a variety of hand tools, power tools and spare components, making it the ideal companion for all kind of MROs.

Sturdy injection molded body made in copolymer polypropylene, able to withstand shocks, rough usage and harsh weather conditions, features include two side handles, an extractable trolley handle and four robust and silent wheels.

The upper compartment closed by the top lid contains a removable tray for spare hand tools placed on top of a recessed area where 5 small component boxes or a laptop computer can be stored. The lower compartment, protected by a collapsible front door, can accommodate 3 to 8 drawers of variable height (30, 60 or 95 mm.)



Part No.	Ref	Description	Dimensions
A11.B.4L		GT Line All In One Tool Box 4 Empty 60mm Drawers	581 x 381 x 455mm
A11.KT02		GT Line All In One Tool Box 4 Empty Drawers	581 x 381 x 455mm

Pelican Cases



Sensitive equipment needs protection, and since 1976 the answer has been the Pelican™ Protector Case. These cases are designed rugged, and travel the harshest environments on earth. Against the extreme cold of the arctic or the heat of battle, Pelican cases have survived.

Made in the USA, these tough cases are designed with an automatic purge valve, that equalizes air pressure, a watertight silicone O-ring lid, over-molded rubber handles and stainless steel hardware.



Contact us for more sizes.

Cantilever Box



A strong cantilever tool box designed with a large capacity area for storing tools and accessories. Opening the handles of this five tray metal toolbox organiser gives immediate access and view of all the five compartments. The compartment bottoms have been covered with foam as a barrier between the tools and the metal toolbox. It can be fitted with our two-coloured tool control foam inlays.

The tool box is extremely strong and capable of withstanding knocks and bumps during transport or at worksites. It is the perfect workmate to have, so your tools can be kept close without impeding maintenance or servicing.



Part No.	Ref	Description	Dimensions
BT13A		Cantilever Tool Box 5 Trays	550 x 220 x 215mm

Professional Rollcabs

Part No: [3007RC-BK](#) | [4111RC-BK](#) | [5413RC-BK](#)



Henchman Aerospace cabinets are designed and made to high specifications to meet our Aerospace and industrial customer's high expectations and needs, these tool boxes are exceptional quality for their value compared to similar boxes on the market.

Constructed from 1.0mm steel which gives the cabinet a lot more strength (and weight), the Cabinets are fitted with quality ball bearing slides, solid aluminium drawer handles and heavy duty, easy locking casters.

- Polished aluminium drawer handles
- Polished aluminium side trims
- 100lbs ball bearing slides for easy and smooth drawer opening & closing
- Black MDF work top
- Heavy duty 5 x 2 inch PU casters, 2 swivel with brakes, 2 rigid



A



B



C

Part No.	Ref	Description	No of Drawers	Drawer Internal Dimension (W x D x H)		Dimensions (W x D x H)
3007RC-BK	A	Rollcab 7 Drawers	5	617 x 418 x 51mm		762 x 460 x 1033mm
			1	617 x 418 x 201mm		
			1	617 x 418 x 216mm		
4111RC-BK	B	Rollcab 11 Drawers	1	951 x 418 x 126mm		1056 x 460 x 1033mm
			3	594 x 418 x 51mm	298 x 418 x 51mm	
			1	594 x 418 x 126mm	298 x 418 x 126mm	
			1	594 x 418 x 201mm	298 x 418 x 201mm	
			1	1275 x 418 x 142mm		
5413RC-BK	C	Rollcab 13 Drawers	4	594 x 418 x 72mm	594 x 418 x 72mm	1380 x 460 x 1049mm
			2	594 x 418 x 147mm	594 x 418 x 147mm	
			2	594 x 418 x 147mm	594 x 418 x 147mm	

Henchman Storage Cabinets

Australian Made high density Storage Cabinets, Workbenches and Cupboards



Our Storage Cabinets are designed to offer flexible configuration options, allowing you to develop a custom storage solution to meet your specific workplace needs.

Space Maximisation - High density storage enables maximum use of available space. By selecting appropriate drawer heights and partitioning, these cabinets can provide storage with minimal space wastage, excellent accessibility and flexibility.

Heavy Duty Construction - 2mm rigid interlocking welded frame, providing excellent structural stability.

Base Options - Supplied standard with levelling feet, heavy duty castors and forklift bases are available to enable Workbenches and Cabinets to be relocated whilst fully loaded.

Bench Tops - To maximise the versatility a range of wood or steel bench tops can be added to provide a durable work surface.

Roller Cabinets

The cabinets are wide, standard depth cabinets which can be used in stationary or mobile applications, ideal for storing parts and components or personal tools.

Single & Full Extension Drawers - Single Extension runners can support up to 80kg UDL (uniform distributed load) per drawer, Full Extension runners can support between a massive 150kg and 200kg UDL (depending on cabinet width). All drawers use heavy-duty ball bearing runners and are available in 5 standard sizes.

Locking - Cabinets incorporate a central rear locking system to securely lock off all drawers within the cabinet.

Anti-tilt System - To minimise risk of injury, cabinets are fitted with a unique "True anti-tilt mechanism" that prevents multiple drawers being pulled open at one time.

Cabinet Integration - Cabinets can be integrated to create a complete storage system. Cabinets can be connected on side or top.



Contact us
to customise
your storage
solution.

Tool Wagon

Part No: **TC2700B**

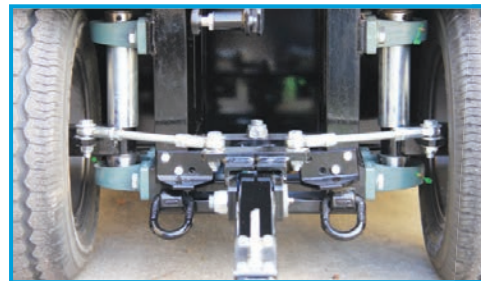
The Henchman Toolwagon is fully engineered and purpose-built for aircraft maintenance. The wagon can be forklifted for deployment requirements and is fitted with tie-down points for transport. The wagon is produced in a zinc coated steel for corrosion resistance with stainless steel covered top and running boards for added protection. Initially this unit was designed for the Royal Australian Air Force but has been well accepted by airlines and MRO's. It can be supplied as a fully kitted out toolwagon complete with tools.

Features:

- Unique Henchman product
- Robust, all steel construction
- Overall, external key lock
- Ball bearing roller drawers, high weight capacity, with automatic locking slam catches
- Stainless steel work surface and slotted tool panel behind a lockable roller shutter
- Commercial pneumatic tyres with alloy wheels
- Steering assembly with excellent, tight turning circle
- Quick release towbar stowage with automatic park brake when stowed
- Engineered tie-down points for transport
- Australian-made, custom modification available to order
- Any colour available to order
- Dimension: 2.655m W x 1.0m D x 1.82m H (excluding towbar)

Standard Drawer Configuration:

- Left:
 - 6 x 100mm H
 - 1 x 150mm H
- Right:
 - 2 x 75mm H
 - 4 x 100mm H
 - 1 x 200mm H
- Other combinations of drawer sizes available



Flightline Toolboard

Part No: **HTFLK.2600.2020**

Toolboard in a robust flightline cabinet with clear lockable roll down door. Fitted with shadow foam cnc-cut tool layers for visual tool control. Tools can be laser marked and tool tag system available to order.

Features:

- Unique Henchman product
- Robust, all steel construction
- Ball bearing castors
- Pull down polycarbonate clearview locking door
- Velcro attached foam panels for easy modification
- Add the tools needed for your specific needs
- Dimension: 2020 W x 755 D x 2570 H



A-Frame Modular Toolboard

Part No: **MAFTB-3**

Fully customisable Toolboard with foam for easy Visual Tool Control. Multiple boards can be joined depending on storage space required

Features:

- Unique Henchman product
- Solid powder-coated steel frame with base shelf
- Flat-pack shipping
- Pull-out rear wheel for support when relocating unit
- Optional adjustable feet instead of lockable castors for permanent locations
- Can be fitted with battery chargers for power tools
- Add the tools needed for your specific needs
- Dimension: 990W x 460D x 1975H



kabTRAK

Electronic Tool Control Roller Cabinet

The kabTrak is an electronically controlled tool cabinet fitted with our patent pending sensor system. Mechanical hand and power tools are laid out in custom-cut two-coloured foam inlays that make it easy to identify, where each tool belongs, and if a tool is missing.

The interactive touch display is easy to use, tracking the issue and return of hand tools and smaller items – directly at your jobsite.

Customisation:

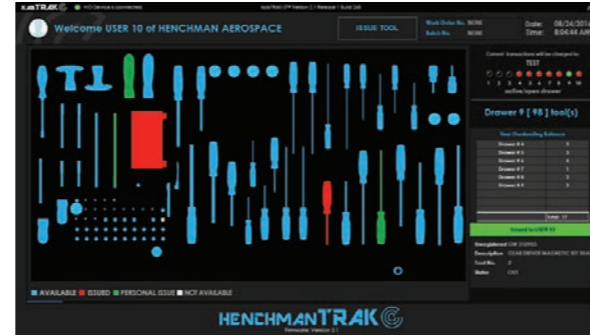
- Select any combination of drawers with a combined height within the available Drawer Combination Height Limit
- 75mm –
- 100mm – 70mm H x 900 or 1300m W x 600mm D useable Space
- 150mm – 120mm H x 900 or 1300mm W x 600mm D useable Space
- 225mm – 195mm H x 900 or 1300mm W x 600mm D useable Space
- 300mm – 270mm H x 900 or 1300mm W x 600mm D useable Space

How it works

After the user signs in with a tap of his card, he can open the drawers and pick tools. The screen will instantly display a live infographic with the status of each tool – tools available, tools issued to other users and tools issued to current user, making it easy to return tools to the correct position. Once the drawer is closed the user can instantly lock the cabinet at the push of a button. If the cabinet is left unlocked it will automatically lock after a short lapse of time.

Seamless Integration

Multiple portaTRAK units can be used seamlessly and they can also be used alongside kabTRAK and cribTRAK. This allows us to tailor a tool tracking solution to your specific requirements.



Part No.	Dimensions (excluding wheels and tablet)			Available Drawer Combination Height (mm)	Standard Drawer Combination
	Width (mm)	Height (mm)	Depth (mm)		
KABTRAK-0	710	810	755	675	3 x 100 + 1 x 150 + 1 x 225
KABTRAK-1	1010	810	755	675	3 x 100 + 1 x 150 + 1 x 225
KABTRAK-2	1010	1185	755	1050	9 x 100 + 1 x 150 (900 wide)
KABTRAK-3	1410	1185	755	1050	9 x 100 + 1 x 150 (1300 wide)



portaTRAK

Electronic Tool Control Scales

The portaTrak is a unique tracking system for for the fast issue and return of portable toolkits using accurate weight measurement.

How it works

After the user signs in with a tap of his card, he places a toolkit on the scales that will be recognized by the portaTRAK using an RFID tagging system. The weight of the kit is checked against the recorded weight, and if it matches the kit will be issued or returned.

lokkaTRAK

The lokkaTRAK extends the capability of the portaTRAK. It incorporates a locker system, providing an unmanned and secure storage of portable kits.

How it works

After the user signs in with a tap of his card, he selects "Issue Kit" on the touch screen and the tail number of the aircraft he will be working on. The lokkaTRAK will then open a locker, giving access to a toolkit that can be issued after checking its identity and weight using the portaTRAK scale.

When returning the kit, the correct weight will be checked before a locker is opened. The system recognises if the toolkit has been returned into the locker and completes the transaction once the door is firmly shut.



cribTRAK

Electronic Tool Control Barcode Scanner

The cribTrak bridges the gap using RFID tagging and/or barcoding to monitor manual tool movement with a scanning system.

This is the simplest way to track items often stored in a toolcrib, as well as large items that do not fit into portable toolkits or a kabTRAK.

How it works

To use the cribTRAK, the user swipes their access badge and enters an aircraft registration number. The user then scans the barcode on the item using the built in scanner to issue or return the item.

The cribTRAK has a green display when all tools are present or red when any tools are out. When tools are out, simply touching the display opens a list of tools issued and the user that took them.



helping you to work, professionally



henchman
p r o d u c t s

www.henchman.com.au

Australia

Head Office
8 Pavilion Place
Cardiff NSW 2285
Australia

Free: 1800 091 109
Tel: +612 4956 7111
Fax: +612 4956 7811

New Zealand

Tel: 0800 436 246

UK

Tel: 0-800-069-8585

USA

Tel: 1-800-408-1082

sales@henchman.com.au